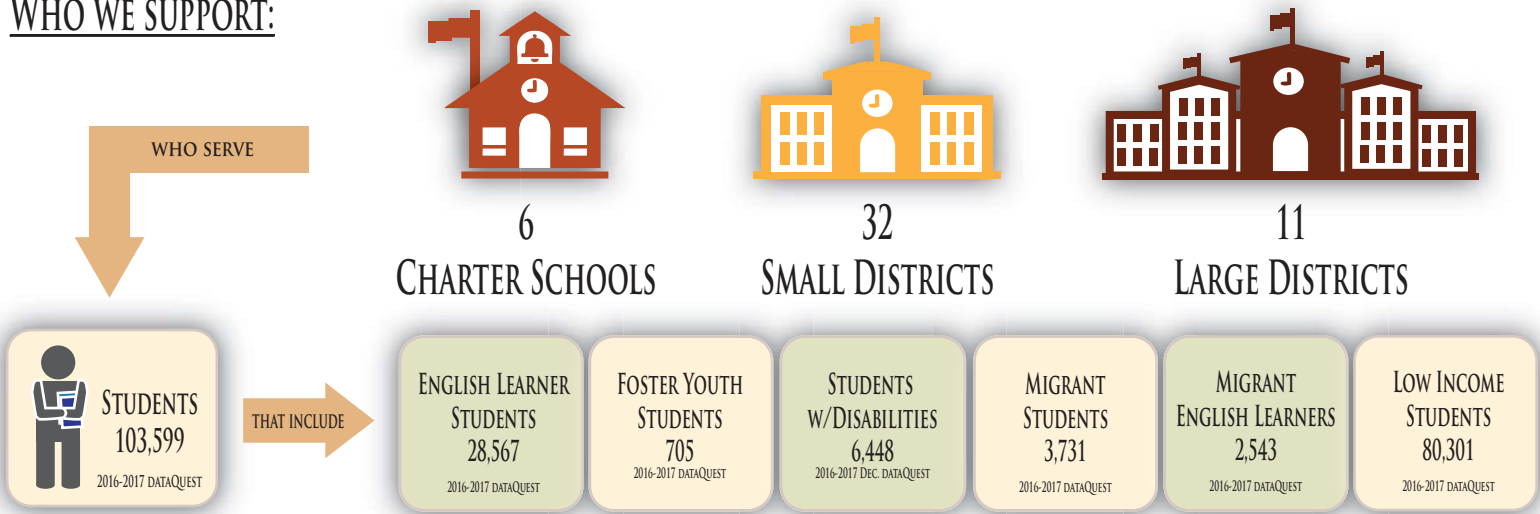


**OUR STORY:** In 2013, with the state legislature's passage of the Local Control Funding Formula, California embarked on a bold new funding model for its public schools. This new model requires a shift in our thinking from the traditional compliance model to one of empowerment, starting with local community involvement and based on performance, improvement, and equity amongst districts and students. In return for a more equitable distribution of funds, Local Education Agencies are required to complete Local Control and Accountability Plans (LCAPs), which strategically outline the goals and actions for improving students' education as measured by conditions of learning, pupil achievement, and climate within schools and districts. The Leadership Support Services Department is dedicated to helping education leaders in Tulare County develop their LCAPs, along with their stakeholders, as a part of the continuous improvement cycle.

## WHO WE SUPPORT:



## SERVICES PROVIDED:

### LCAP REVIEW, SUPPORT, APPROVAL

Provide draft feedback, technical support and formal review for Tulare County districts.



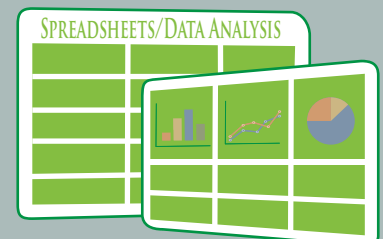
### PROFESSIONAL LEARNING

- 1.) *learning and leadership* FORUM
- 2.) LCFF Trainings
- 3.) One-on-one District Chats & Technical Support



### DATA SERVICES

Compile, review and analyze school and student data related to LCAPs, California School Dashboards and educational programs.



DIVISION CONTACT:  
CHARLENE STRINGHAM  
ASSISTANT SUPERINTENDENT OF INSTRUCTION  
CHARLENE.STRINGHAM@TCOE.ORG  
PH: (559) 302-3633

**Tulare County**  
**Office of Education**  
Jim Vidak, County Superintendent of Schools  
6200 S. MOONEY BLVD., P.O. BOX 5091  
VISALIA, CA 93278-5091