



ELA/ELD

October 7-8, 2025
8:30 a.m. - 3:30 p.m.

Location:

Tulare County
Office of Education
7000 West Doe Avenue
Visalia, CA 93291

Audience:

Teachers grades K-12,
Instructional coaches, and
administrators

Cost:

\$500.00

Includes:

Resources and lunch

OMS Registration:

<http://tulare.k12oms.org/147-271160>

B.Y.O.D:

Bring Your Own Device
(laptop or tablet)

Tulare County Office of Education

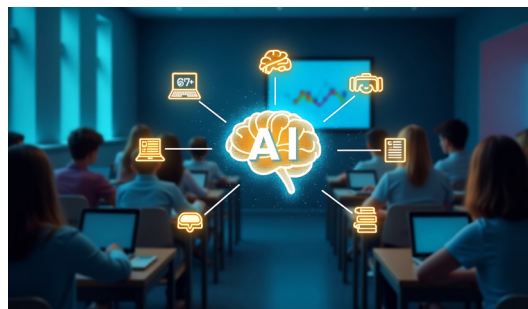
Tim A. Hire, County Superintendent of Schools

Artificial Intelligence and the ELPAC: Pathways to Reclassification (Grades K-12)

Walk away with the confidence and skills to effectively use AI tools for teaching multilingual learners. This workshop focuses on leveraging AI to help your students succeed on the ELPAC and progress toward reclassification. While the examples are ELPAC-specific, the strategies and resources you'll learn are versatile and can be applied to any instructional area.

You'll Learn How To:

- Create ELPAC-aligned materials with AI support
- Quickly differentiate lessons for your English learners
- Save time by streamlining your planning and prep
- Boost student success and reclassification rates



*An Educational Resource
Services Professional Learning
Opportunity*

Content Contact:

Sandi Cahill | sandi.cahill@tcoe.org
Doug Cairns | doug.cairns@tcoe.org
(559) 651-3031

Registration Contact:

Christina Sartuche
(559) 651-3031 or christina.sartuche@tcoe.org

CANCELLATIONS- Participants must cancel ten (10) working days prior to the event in writing via email; those who do not will be billed for the registration fee. Workshops are subject to rescheduling or cancellation if a minimum of fifteen (15) participants have not registered ten (10) working days prior to the event.

